

# GUERNSEY'S NUMBER ONE ADDRESS

## Apartment Specifications

Phase One  
Availability

### APARTMENT 26

£2,950,000 Open Market

3rd Floor - 190m<sup>2</sup> / Garden 53m<sup>2</sup>

#### Accommodation Summary

Bedroom 1	4.5 x 4.4
Ensuite	2.6 x 2.1
Bedroom 2	3.7 x 4
Ensuite	2.3 x 1.5
Bedroom 3	3.4 x 4.1
Ensuite	2.4 x 2
Hall	7.9 x 1.5
Storage and HWC	1.5 x 1.7
Wc	2 x 0.9
Kitchen / living room	11.6 x 6.2 + cupola 4.5

#### Aspect

360 degree views

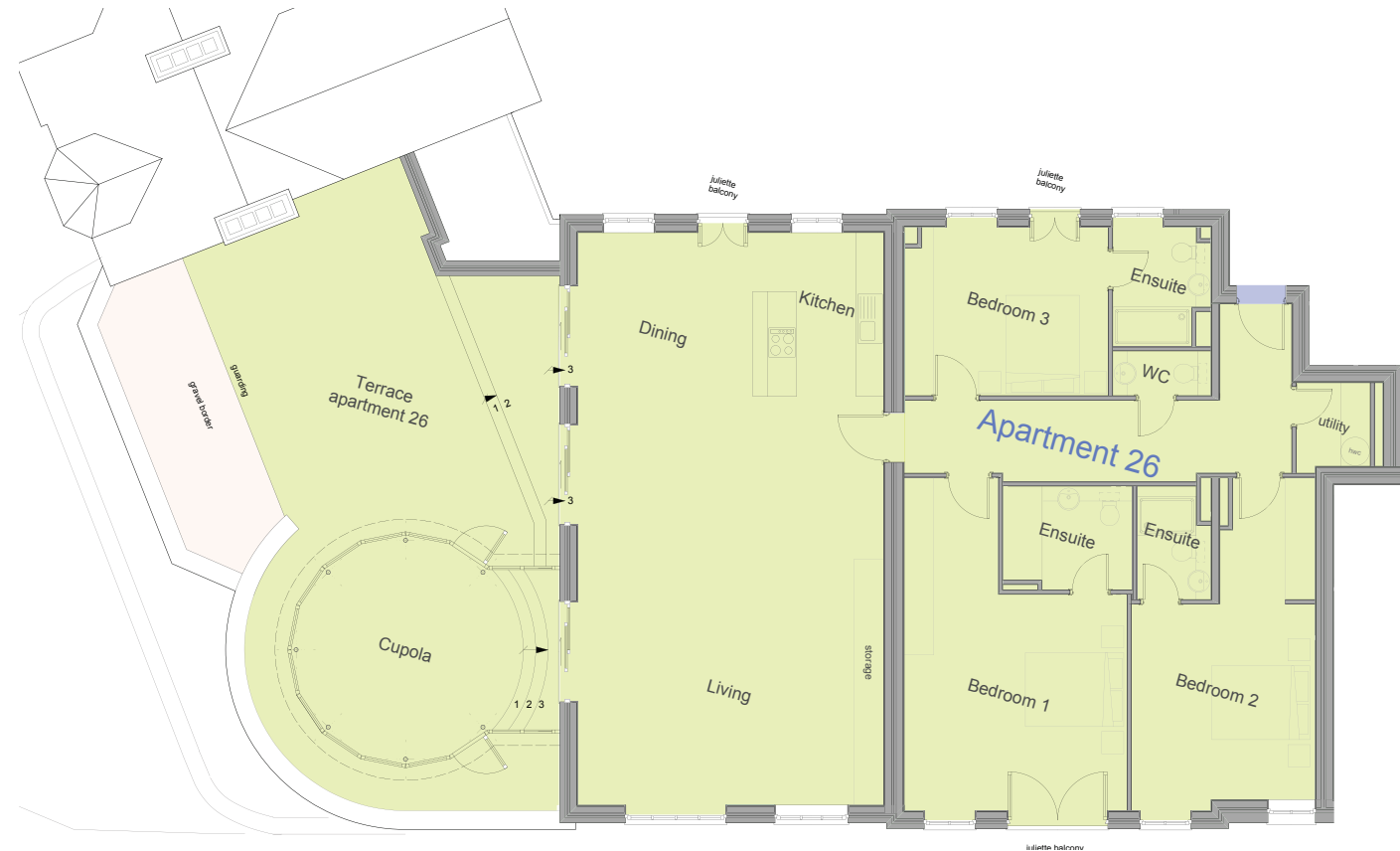
#### Amenities

Access from courtyard and car park by lift and stairs rotunda. Terrace facing East Coast

#### Service Charge

2014 = £2,624

2015 = £4,193



ONE  
ST JULIAN'S AVENUE