

GUERNSEY'S NUMBER ONE ADDRESS

Apartment Specifications

Phase Three
Availability

APARTMENT 20

£410,000 Local Market

2nd Floor - 54m²

Accommodation Summary

Bedroom 1	3.8 x 3.6
Hall	2.3 x 1.2
Utility	4.1 x 1.4
Bathroom	2.3 x 2.2
Kitchen / living room	6.2 x 4.4

Aspect

North to Vauxlaurens Lane, East rooftops sea view

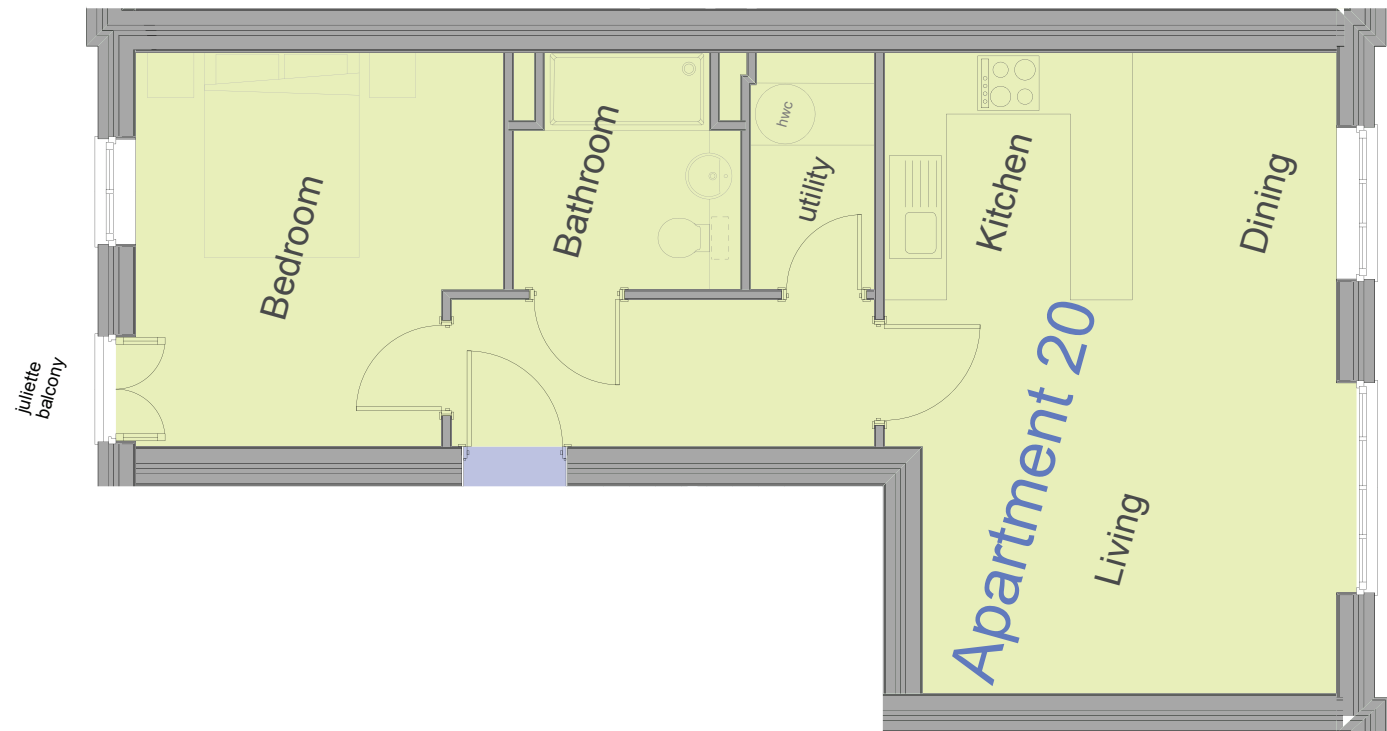
Amenities

Access from courtyard and car park by lift

Service Charge

2014 = £746

2015 = £1,192



ONE
ST JULIAN'S AVENUE