

GUERNSEY'S NUMBER ONE ADDRESS

Apartment Specifications

Phase Two
Availability

APARTMENT 11

£505,000 Local Market

1st Floor - 81m²

Accommodation Summary

Bedroom 1	3.4 x 3.4
Bedroom 2	2.8 x 4.5
Ensuite	1.9 x 1.9
Hall	0.6 x 0.9
Bathroom	1.8 x 2.2
Storage	4.6 x 1.2
Utility	1.1 x 0.7
Kitchen / living room	6.4 x 6.4

Aspect

East front & North to Vauxlaurens Lane

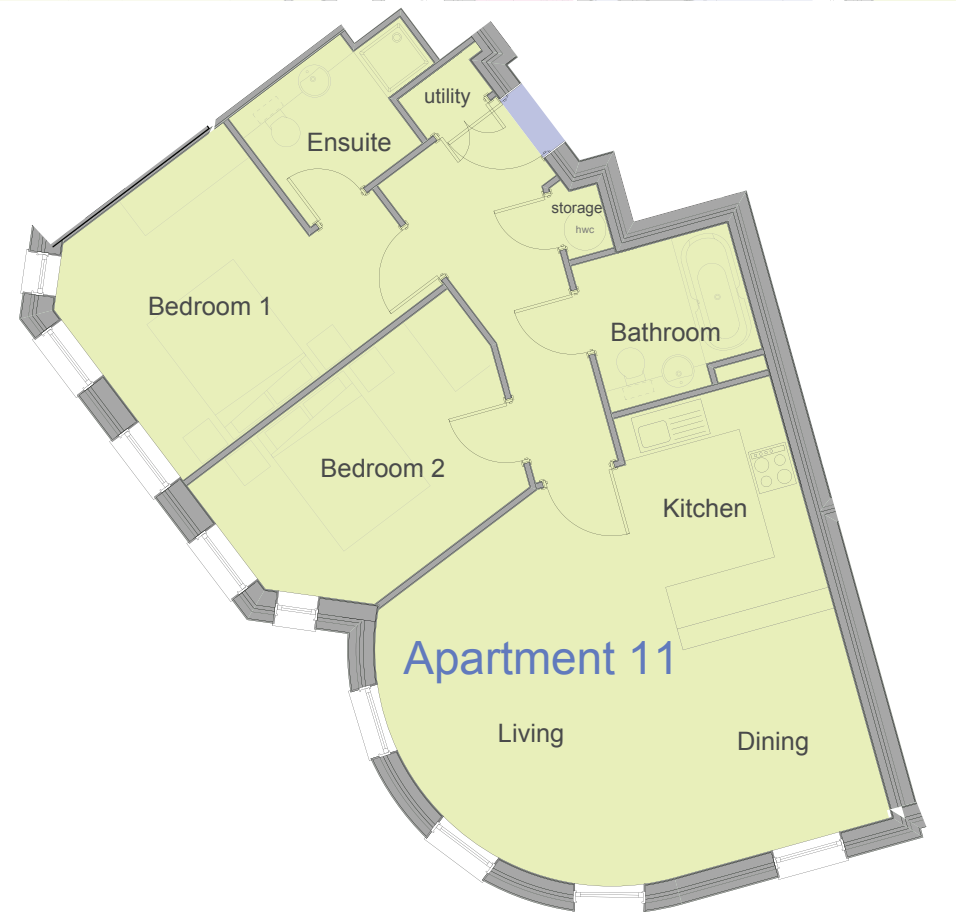
Amenities

Access from courtyard. Large lounge with windows facing down St Julian's Avenue

Service Charge

2014 = £1,119

2015 = £1,788



ONE
ST JULIAN'S AVENUE