

# GUERNSEY'S NUMBER ONE ADDRESS

## Apartment Specifications

Phase Two  
Availability

### APARTMENT 10

£390,000 Local Market

1st Floor - 54m<sup>2</sup>

#### Accommodation Summary

Bedroom	3.8 x 3.6
Hall	4.1 x 1.4
Bathroom	2.3 x 2.2
Utility	2.3 x 1.2
Kitchen / living room	6.2 x 4.4

#### Aspect

North to Vauxlaurens Lane, East rooftops sea view

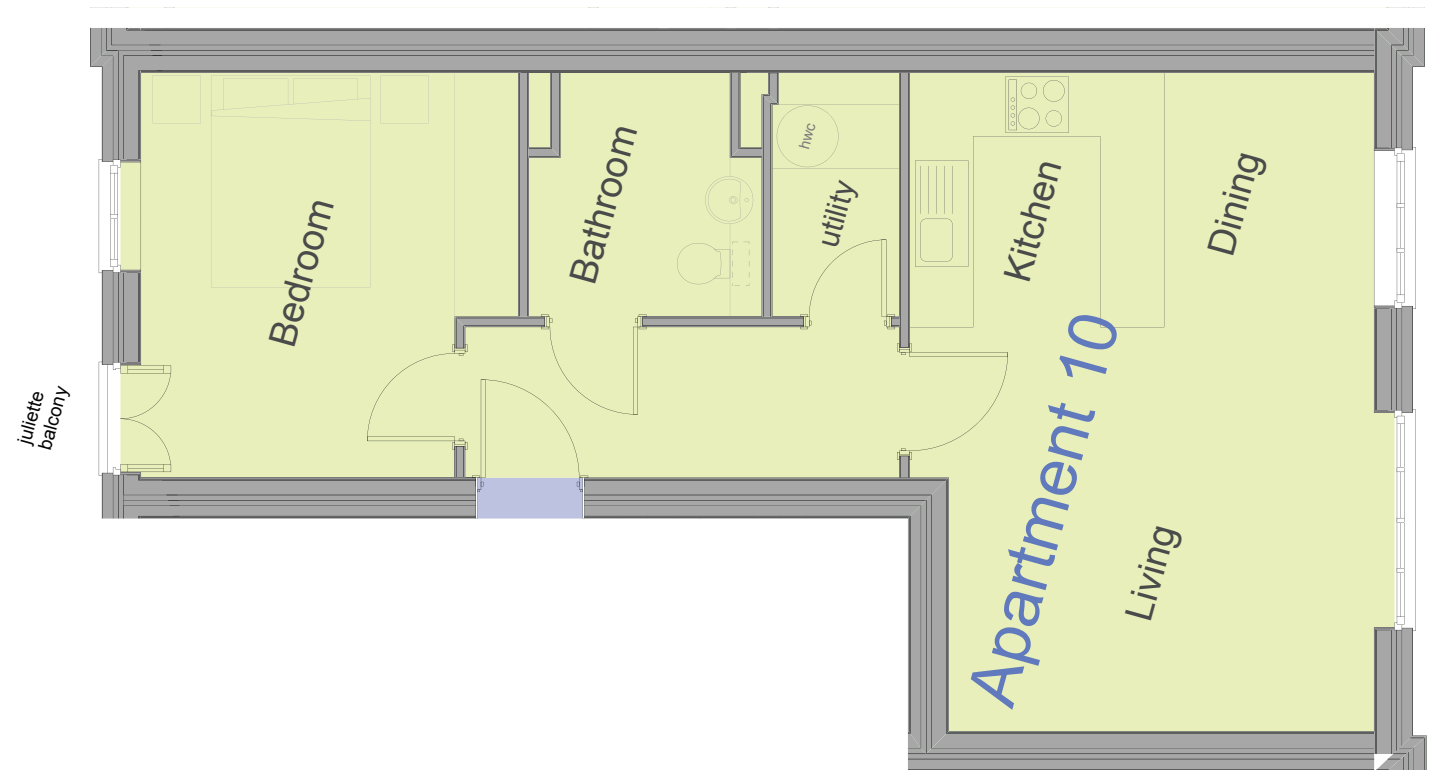
#### Amenities

Access from courtyard. Juliette balcony and car park by lift

#### Service Charge

2014 = £746

2015 = £1,192



ONE  
ST JULIAN'S AVENUE