

GUERNSEY'S NUMBER ONE ADDRESS

Apartment Specifications

Phase One
Availability

APARTMENT 9

£575,000 Local Market

1st Floor - 97m²

Accommodation Summary

Bedroom 1	3.6 x 4.3
Bedroom 2	2.6 x 4.4
Ensuite	2.3 x 1.6
Hall	5.8 x 1.4
Utility and refuse	1.5 x 1.7
Bathroom	2.4 x 1.9
Kitchen / living room	8.4 x 5.7

Aspect

North to Vauxlaurens Lane, East rooftops sea view

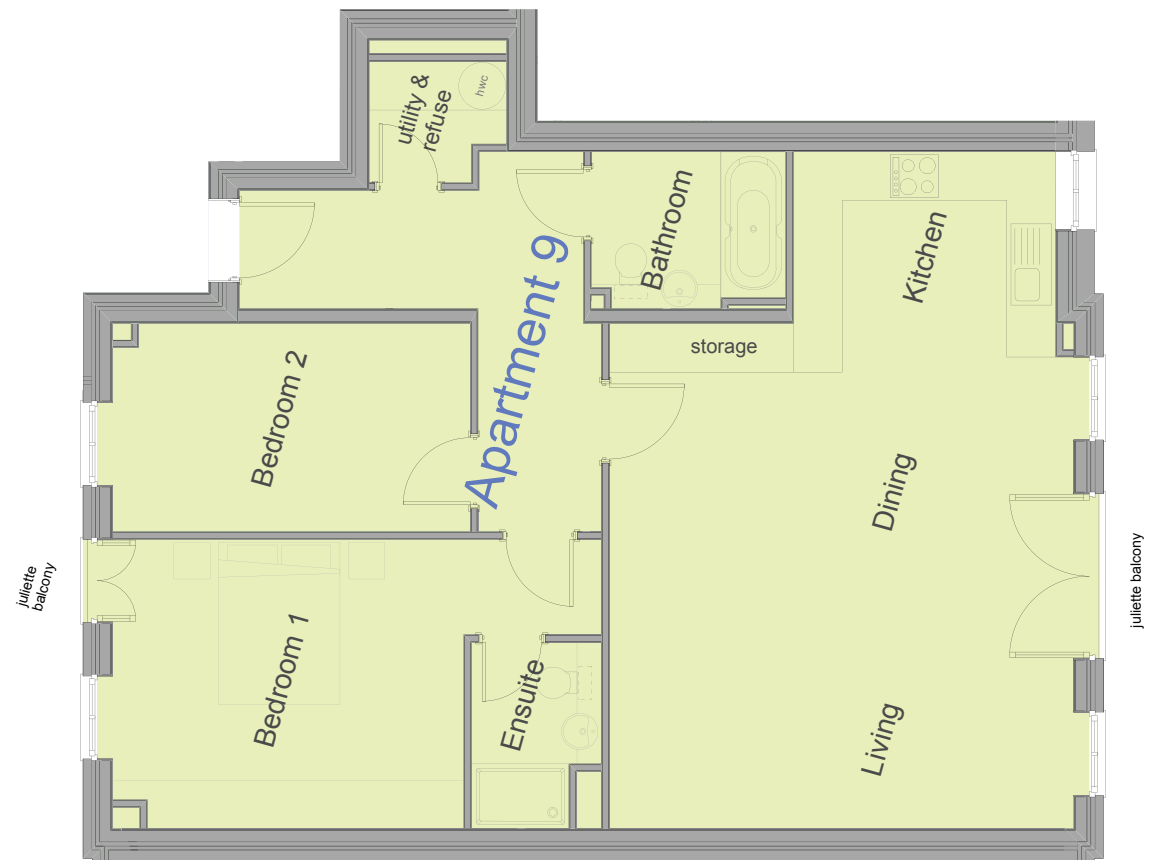
Amenities

Access from courtyard and car park by lift

Service Charge

2014 = £1,340

2015 = £2,141



ONE
ST JULIAN'S AVENUE