

GUERNSEY'S NUMBER ONE ADDRESS

Apartment Specifications

Phase One
Availability

APARTMENT 4

£365,000 Local Market

Ground Floor - 64m²

Accommodation Summary

Bedroom	4.9 x 3.5
Bathroom	2.1 x 2
Hall	1.1 x 8
Storage	1.4 x .5
Utility	1.2 x 0.7
HWC	0.7 x 0.7
Kitchen / living room	6.2 x 4.3

Aspect

North to Vauxlaurens Lane & South to courtyard

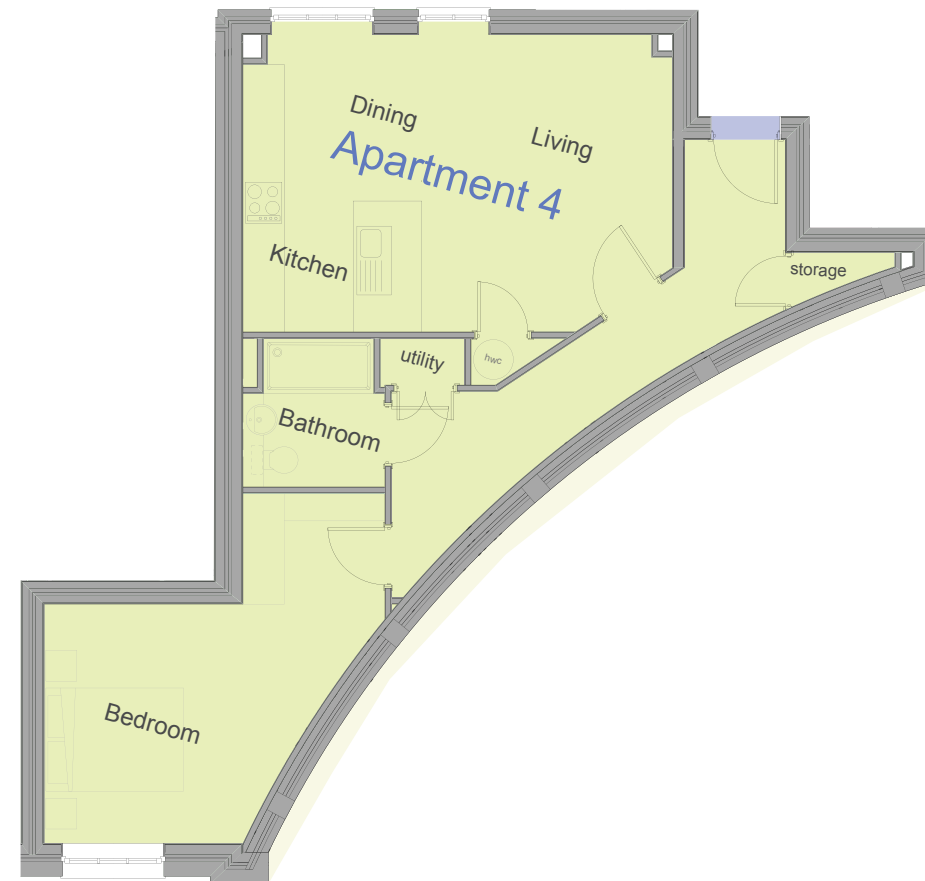
Amenities

Access from courtyard. Lounge facing courtyard bedroom to Vauxlaurens Lane

Service Charge

2014 = £884

2015 = £1,413



ONE
ST JULIAN'S AVENUE