

GUERNSEY'S NUMBER ONE ADDRESS

Apartment Specifications

Phase One
Availability

APARTMENT 3

£345,000 Local Market

Ground Floor - 43m²

Accommodation Summary

Bedroom 1	4 x 3.4
Bathroom	2.1 x 2
Hall	1.4 x 1.4
Kitchen / living room	5.6 x 3.8

Aspect

North to Vauxlaurens Lane & South to courtyard

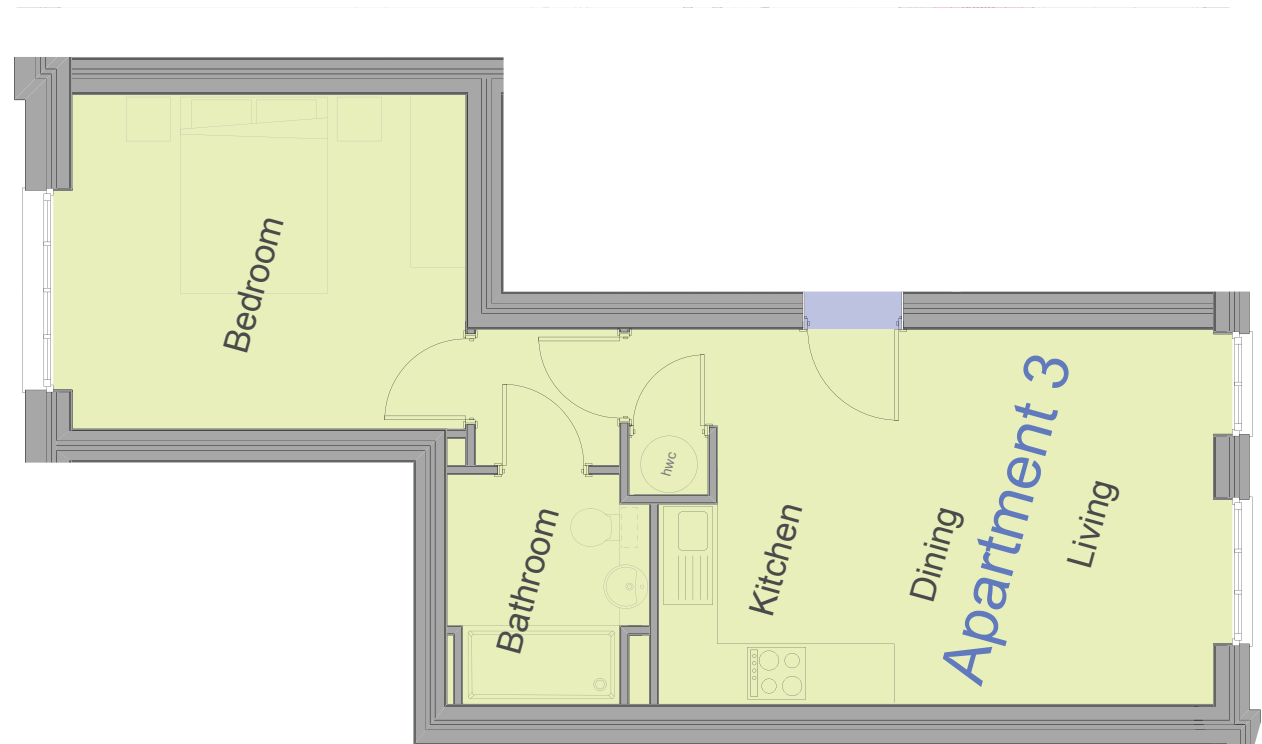
Amenities

Access from main foyer in courtyard.
Lounge facing courtyard

Service Charge

2014 = £594

2015 = £949



ONE
ST JULIAN'S AVENUE