

# GUERNSEY'S NUMBER ONE ADDRESS

## Apartment Specifications

Phase Three  
Availability

### APARTMENT 2

£470,000 Local Market

Ground Floor - 81m<sup>2</sup>

#### Accommodation Summary

Bedroom 1	3.4 x 3.4
Bedroom 2	2.8 x 4.5
Ensuite	1.9 x 1.9
Hall	4.7 x 2
Utility	1.1 x 0.7
Storage	0.6 0.9
Bathroom	1.8 x 2.2
Kitchen / living room	6.4 x 6.4

#### Aspect

East Front & north to Vauxlaurens Lane

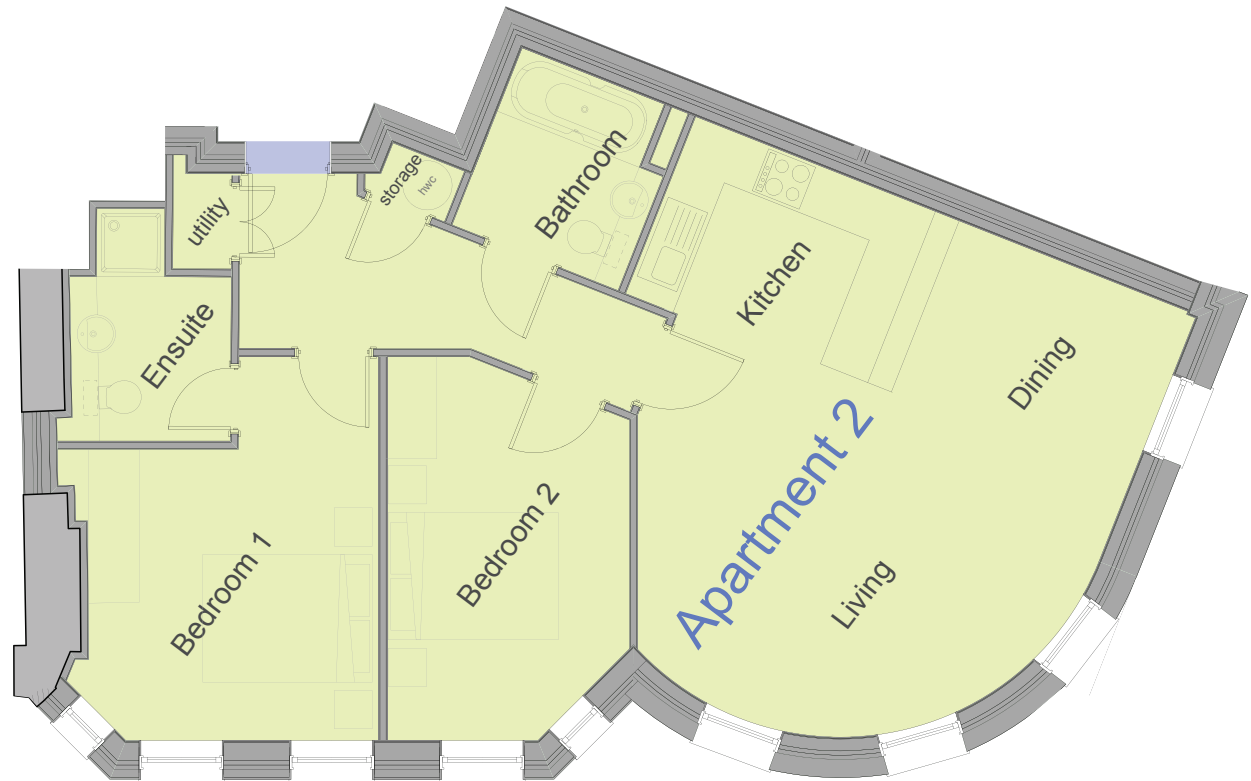
#### Amenities

Access from courtyard. Large lounge with windows facing along St Julian's Avenue

#### Service Charge

2014 = £1,119

2015 = £1,778



ONE  
ST JULIAN'S AVENUE